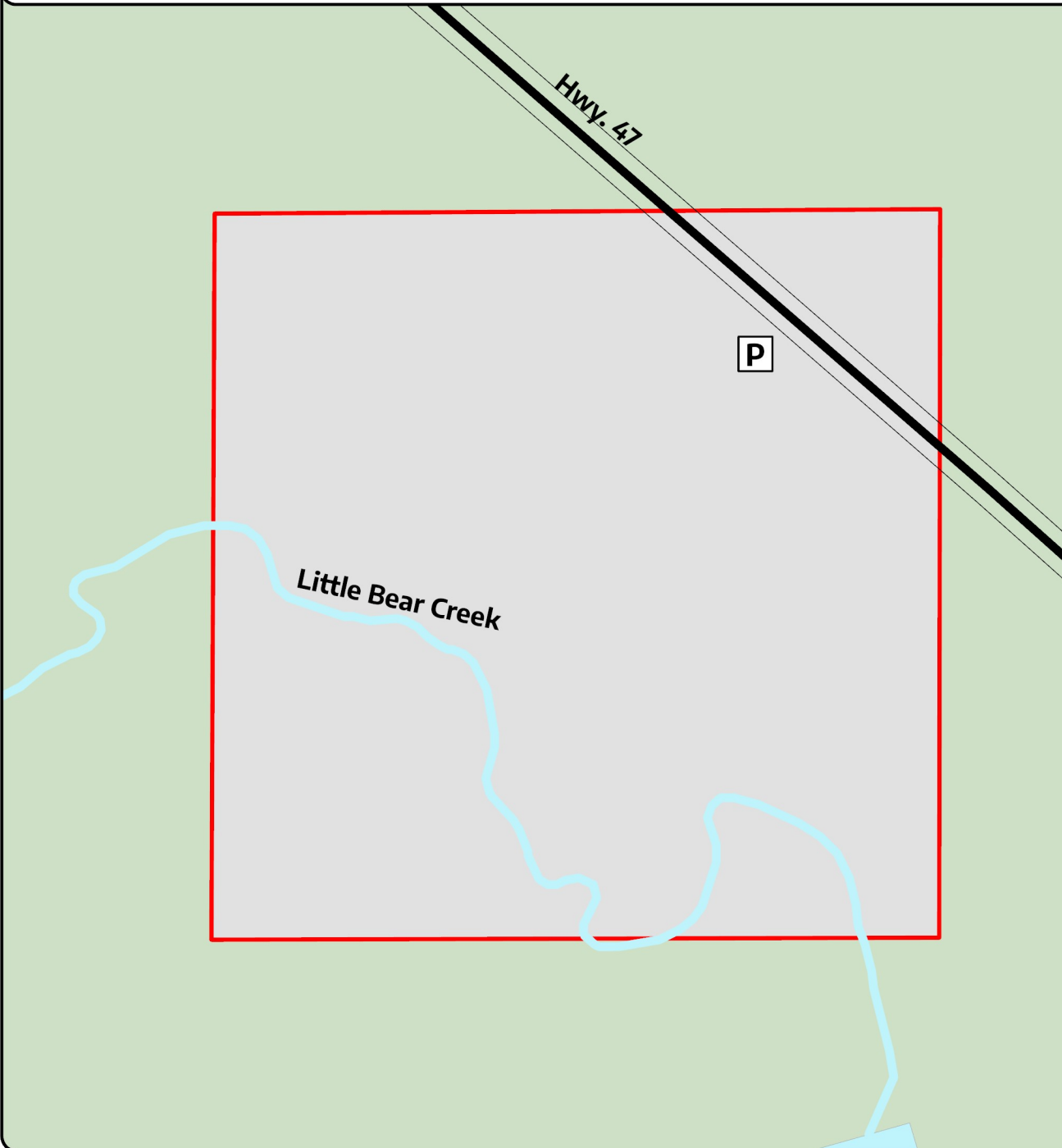


Little Bear Creek Conservation Area



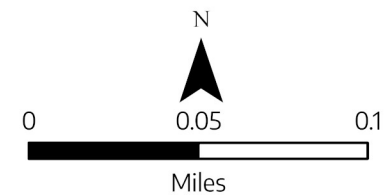
Town of Sherman, Iron County

Use Guidelines



Directions

From Eagle River: Take Hwy. 70 west 23.3 miles. Turn left on Hwy. 51 and continue for 1.7 miles. Turn right on Hwy. 47 and continue 21.3 miles to the property. The parking area is located on the south side of Hwy. 47.



 Property Boundary

 Public Land



northwoodslandtrust.org