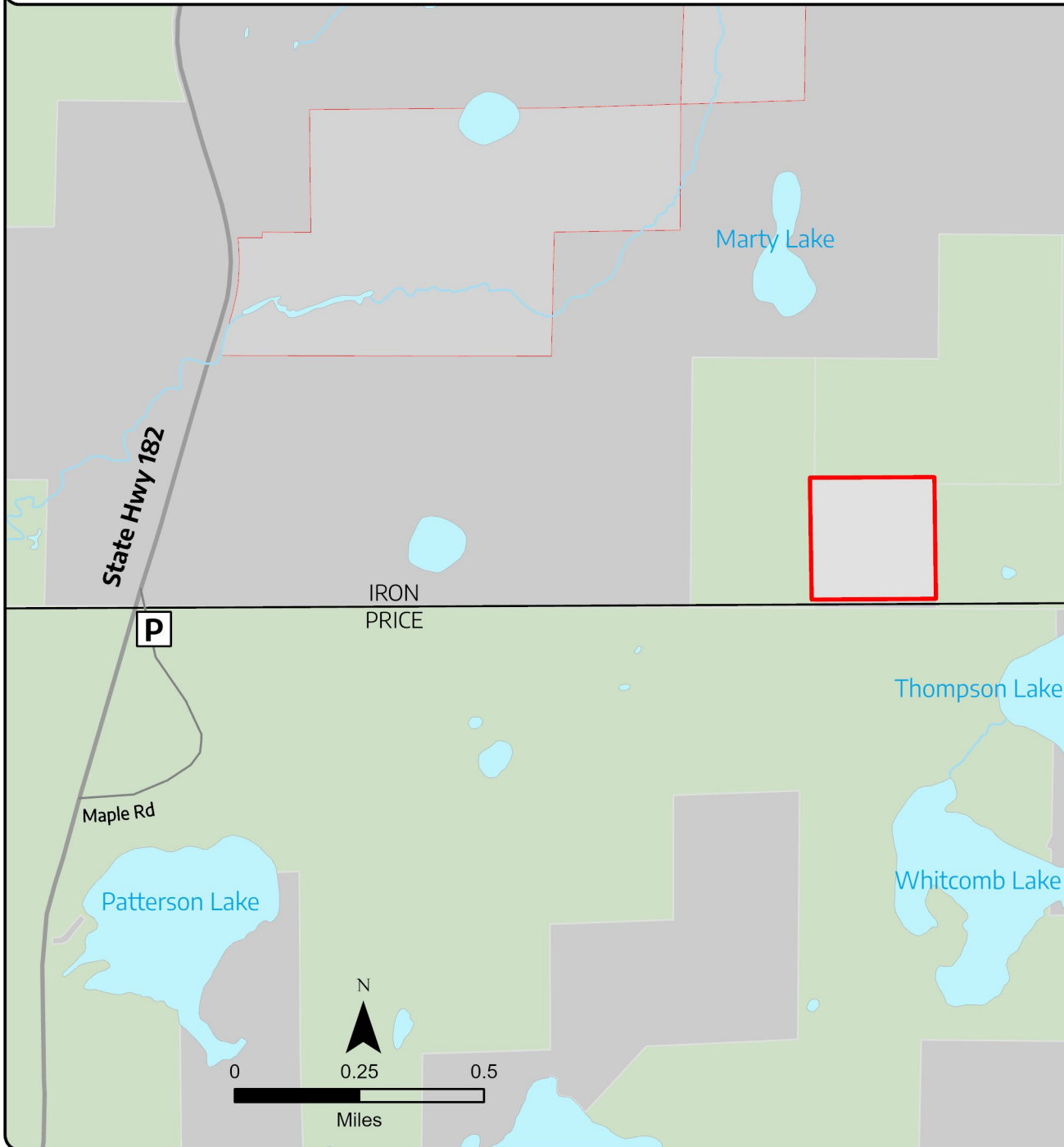


Springstead Muskeg 40 Conservation Area





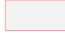
Town of Sherman, Iron County

Use Guidelines



Directions

From Eagle River follow State Highway 70 west 12.2 miles to County Highway J in St. Germain. Turn left onto County Highway J and follow it 11.7 miles to Minocqua. Turn right onto Highway 47 and continue for 22.7 miles. Turn left onto State Highway 182 and continue for 14.3 miles. Maple Rd. will be on the east side of the highway. Park along the road, and walk east to the property through public lands.

-  Property Boundary
-  Public Land
-  Beaver Creek Hemlocks



northwoodslandtrust.org