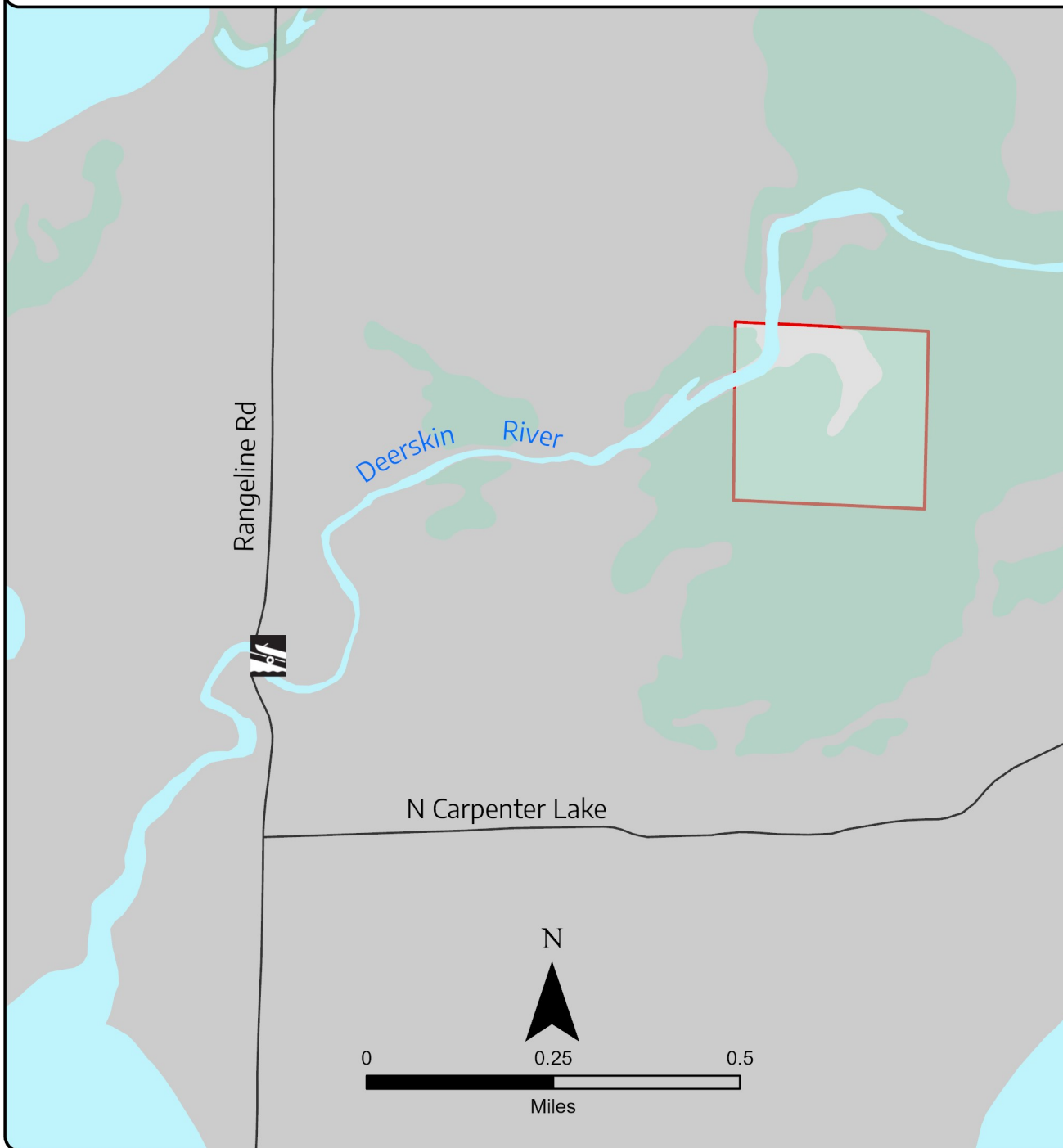


Dan Wisniewski Deerskin River Preserve



Town of Washington, Vilas County

Use Guidelines



Directions

Only accessible by water. From Eagle River drive west on State Hwy 70 for 2.9 miles to Rangeline Rd. Turn north onto Rangeline Rd. and continue 2.2 miles until you reach the boat landing on the Deerskin River. Paddle upstream 1 mile to the preserve. The entrance sign is located along the north boundary of the property. Coordinates for the preserve are 45.957892, -89.161865.

 Property Boundary

 Wetlands



northwoodslandtrust.org